



Wallerawang Public School Newsletter



77 Barton Avenue
P.O. Box 21
Wallerawang 2845
Ph: 02 63551210
Fax: 02 63557003

What's On? When?

Uniform Shop
Mondays
2:00-3:00pm

School Assembly
THIS FRIDAY
9:10am
Items by
1/2F & 3/4P

School
Spectacular
excursion
Friday 28th Nov

2015 Leaders
Speeches
and Election Day
Wednesday 3rd
December

Christmas
Advent Pageant
Friday 5th Dec

School
Presentation Day
Tuesday 9th
December
9:30am



November 26th 2014 Term 4 Week 8

From the Principal's Desk

Swim school was finalised last Friday with 60 children wrapping up a great week of new learning, heightened confidence and new friendships. Congratulations to all children for their participation in the program and a big thanks to Ms Graham for her co-ordination of the program.

Next Tuesday 2nd December Mrs Fahey will lead a small **choir** group of 27 children to sing at Three Tree Lodge and Tanderra Nursing homes. Notes have been distributed and we look forward to performing and being a part of the broader community and sharing with the elderly as the year wraps up.

The annual **Christmas Advent Pageant** will be held next Friday 5th December. Permission and information notes have been distributed. Early Stage 1 and Stage 1 will leave the school by bus at 10am to go down to the Main St of Wallerawang and visit a number of local businesses where they will sing a Christmas Carol. On their return to school a special Scripture Assembly will be held in the School Hall for K-6 along with a presentation of items from Early Stage 1, Stage 1 and Stage 2. A sausage sizzle lunch including icecream and a drink will be served to every child for the cost of \$4.00 each.

Presentation Day will soon be upon us and this year we open an **invitation to parents who would like to contribute slices, cakes and other goodies to the morning tea** that follows the ceremony. School staff and P & C members have traditionally provided the morning tea. Any assistance will be greatly appreciated. Presentation Day is on Tuesday 9th December commencing at 9:30am sharp.

The **Christmas Carols** evening, set down for Friday 12th December is moving ahead with the planning team meeting yesterday afternoon to further refine the family friendly evening. Special thanks is extended to the Carol planning team for their ongoing commitment to the December 12 function. Any children wishing to sell some raffle tickets for the concert evening should contact Ms Gurney and Mrs Quinn.

Students in Year 6 attending **Lithgow HS next year** need to be present at Lithgow HS next Wednesday 3rd December for a 3.5hr transition and introduction program commencing at 9:30am and concluding at 1:00pm. Private transport arrangements are in place and Year 6 do not need to attend Wallerawang School to commence the day.

Tree branches in the school grounds. An awareness for families that the Department of Education and Communities (DEC) have a contracting team that is working their way around school sites based on a priority list to clean up tree debris from the recent snow fall. The debris as such does not interfere with play areas however it is an eyesore. We have had many offers from parents to help clear the untidy mess however I have been advised by the DEC that the contractors must do it.

School Assembly

Parents and carers are invited to come along this Friday 28th November to our assembly. We will be recognising academic awards, citizenship and behavioural achievements. Class items by 1/2F & 3/4P will feature as part of the morning celebration.

Assembly commences at 9:15am and all parents, carers and community members are welcome to attend.

Date changes for your planner

Please note the following items for your end of year planning.

Wednesday 3/12: Leaders Speeches and voting for 2015 leadership team

Thursday 4/12: Assembly from 9:15am (announce 2015 leaders and a regular assembly)

Thursday 4/12: Student Reports distributed K- 6

Friday 5/12: No assembly

Tuesday 9/12: Presentation Day from 9:30-11:30am

Wednesday 10/12: 1:45pm House Captains / Vice Captains 2015 elections

Thursday 11/12 (Wk 10): Final Assembly 2pm-3pm



Duncan Auld

Principal - Wallerawang Public School

P&C Monster Christmas Stocking Raffle



Raffle tickets are due back Friday 28th November. Extra ticket books are available from the office. The raffle will be drawn on Presentation Day, Tuesday 9th December.

The stocking is stuffed full of the most amazing gifts.

*Teapot & cup, shampoo pack, football, drink bottle, socks, lady bug bowl & cup, gift vouchers for Vanilla, Sunnyridge meats, Workmens Club, Taronga Zoo family pass, Paparazzi, Top to End, My Heart's Desire, Busy Corner & Empress Beauty Salon, Sylicon mould, Jewellery box, cupcake kit, photo paper, fascinator, NRL mug, mixing bowls, tiered cake stand, Nutella, key holder, sunglasses, keyboard and a push car! **!WOW!***

If you do not wish to sell your tickets, please return your complete ticket book. It is a legal requirement that every ticket book is accounted for.

P&C Christmas Party

The P&C are holding their annual Christmas Party on Monday 1st December at Black Gold Cabins in Wallerawang. If you'd like to attend, please RSVP to Katena Taylor on 0409 514 992 or Leanne Houlison on 0400 312 197 by Wednesday 26th November.

Schools Spectacular

Schools Spectacular will again be shown on Channel Nine this weekend. The 31st *Schools Spectacular, This is Australia*, showcasing 3,600 of the most talented singers, dancers and musicians from 456 NSW public schools, will be broadcast on **Channel Nine on Saturday 29 November, from 7.00pm – 10.00pm**. The broadcast will also feature performances by *Schools Spectacular* alumni and *The Voice Australia* winner, Anja Nissen. Tune in to see our stars of the future!

For a full list of participating schools, please see www.schoolsspectacular.com.au. Please note there will be a national replay on GEM on Sunday 7 December from 12.30pm.

The entire 3 hour show will also be available to view via catch-up tv at Jump-in from Sunday 30 November 2014. Jump-in is a free, downloadable app. For details please see www.jump-in.com.au

I encourage you to take the time to watch the *Spectacular* - young people are at the heart of all we do and this show will make you proud of public education at its finest.

I would like to congratulate and sincerely thank all of those school communities that have students and staff participating in the 2014 *Schools Spectacular*.

Enjoy the show!

Gregory Prior

DEPUTY SECRETARY

DEPARTMENT OF EDUCATION AND COMMUNITIES

A PROUD SPONSOR OF OUR FAMILY
PICNIC CAROLS NIGHT

WANG BOWLING CLUB

Captain & Prefect Elections for 2015

Leadership speeches will take place on Wednesday 3rd December starting at 9:30am in the school hall. Parents are most welcome to attend. A special assembly will be held on Thursday 4th December at 9:15am to announce the Captains and Prefects for 2015 and present step up, academic and citizenship awards. The new leaders will then be officially inducted on Presentation Day. Only students on Level 7 or above are eligible to nominate for election to school leadership positions.

Vegetable Garden Update

On Friday the 14th of November 5/6G planted apple cucumbers, 5/6F planted baby carrots, 1/2K planted pumpkins, 1/2B and 5/6Q planted tomatoes in our vegetable garden.



A PROUD SPONSOR OF OUR FAMILY
PICNIC CAROLS NIGHT

LJ HOOKER

Wang's Big Bang Magazine

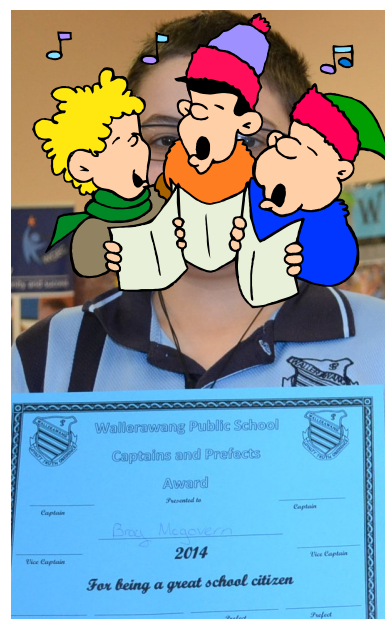
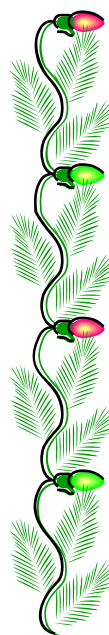
The latest edition is now on the school website. A hard copy can also be purchased from the front office for \$4.00



Assembly Week 7



A PROUD SPONSOR OF OUR FAMILY
PICNIC CAROLS NIGHT
GO KARTS@ EASTERN CREEK



A PROUD SPONSOR OF OUR FAMILY
PICNIC CAROLS NIGHT
EVES



A PROUD SPONSOR OF OUR FAMILY
PICNIC CAROLS NIGHT
GLOSS CREATIONS



Echidnas in KW



A PROUD SPONSOR OF OUR FAMILY PICNIC CAROLS NIGHT



WILLIAMS BUTCHERS



Family Picnic Carol Night Raffle

Monster Christmas Toy Raffle

\$1000.00 worth of prizes

\$1.00 per ticket

Tickets need to be returned sold or unsold on Wednesday 19th November 2014

This raffle will be drawn on the 12th December 2014 during the Carol Evening

Please note that there was a misprint on the ticket booklets, there are 70 prizes to the value of \$1000.00. Not 100 prizes, we apologise for this misprint.





Wallerawang Public School Family Picnic Carols Night

Gold Coin Donation Entry

Photos
with Santa
\$2

Every Child receives a glow
stick, bag of lollies from Santa
and a Zooper Dooper



BBQ and Drinks Stall
OR bring a picnic basket
from home

Lolly Guessing
Competition

Bring a picnic rug

Bring a chair!

Lucky Door
Prize



There will be designated areas
for picnic rugs and an area for
chairs

\$2 Lucky
Dips

\$1000 worth of
Raffle Prizes to be drawn
on the night!

Mr Whippy

Performances by the students
of Wallerawang Public School



5:30 pm Friday 12th December



"Celebrity Christmas Carols 2014"



Sponsorship Packages



Donations up to \$50

Special sponsorship mention in official evenings programme

\$100 Package (2 Weeks)

Electronic signboard exposure for 2 weeks prior to the event

(guaranteed minimum of 500 ten second ads)

Business card in newsletter and on website during the month of the Celebrity Carols Concert

Special sponsorship mention in official evenings programme



\$300 Package (Six Weeks)

Electronic signboard Exposure for six weeks prior to the event

(guaranteed minimum 1,600 ten second ads)

Business card in newsletter and on website for 3 months prior to the event.

Major Sponsor mention in official evenings programme



\$500 Package (Ten Weeks)

Electronic signboard Exposure for ten weeks prior to event

(guaranteed minimum 3,200 ten second ads)

Business card in newsletter and on website for 3 months prior to and

1 month after the event

Major sponsor and business card in official evenings programme



CANTEEN ROSTER

Thursday	27/11	L. Houlison, S. Burns
Friday	28/11	S. Rushworth, S. Scanlan
Monday	1/12	A. Forrest, R. Edwards
Tuesday	2/12	A. Fitzgerald, G. Wardle
Wednesday	3/12	J. Taylor, C. Carter

Canteen News

Bulla Frozen Yoghurt is temporarily unavailable.

This week the canteen has apples, strawberries, watermelon and kiwi fruit available for 50 cents.

English

Muffins topped with ham & grilled cheese for 60 cents will be available for recess **on Thursday and Tuesday.**

A Sausage sizzle lunch will be provided to all students on Friday, 5th December, 2014. No other lunch orders will be available from the canteen. Recess will be available as normal.

The canteen

will be closed all day on Tuesday, 9 December, 2014 for the Presentation Day. All Students will need to bring their recess and lunch from home.

Mrs Debbie Holder

School Uniform Shop News TERM 4 OPENING HOURS MONDAYS 2-3PM

A PROUD SPONSOR OF OUR FAMILY
PICNIC CAROLS NIGHT

GLOSS CREATIONS

Lithgow High School Orientation Day

An orientation day will be held on Wednesday 3rd December for children enrolled or intending to enrol in Year 7 at Lithgow High School in 2015.

It will be a day of introductions, orientation and information and students will require their own transport to and from the high school.

The day will commence at 9:30am in the high school auditorium and conclude at 1:00pm.

For more details or information please contact either Rebecca Hamment or Sam Luchetti at Lithgow High School on 6352 1422.

A PROUD SPONSOR OF OUR FAMILY
PICNIC CAROLS NIGHT

MAX TAYLOR



© Tribune Media Services, Inc.

Sunday	Nov 16	2:00	Sunday	Nov 23	2:00
Friday	Nov 21	7:30	Friday	Nov 28	7:30
Saturday	Nov 22	7:30	Saturday	Nov 29	7:30

Union Theatre - Bridge St Lithgow

Book at High St Music 165 Main St Lithgow or buy tickets at the door

Book by
THOMAS MEEHAN

Music by
CHARLES STROUSE

Lyrics by
MARTIN CHARNIN

Original Production directed by Martin Charnin

Presented on Broadway by Mike Nichols

Irwin Meyer
Alvin Nederlander
Associates Inc.

Produced by
Stephen R. Friedman
The John F. Kennedy Center for
Performing Arts

Lewis Allen
Icarus
Productions

Based on "Little Orphan Annie"
By Permission of The Tribune Media Services, Inc
Originally produced by The Goodspeed Opera House
Michael P. Price, Executive Director

By arrangement with Hal Leonard Australia Pty Ltd Exclusive agent for
Music Theatre International (NY)

Leaving Healthy Footprints
Barri~ngi~rra Marang Baayi
Aboriginal Consultative Group

Are you or your children Aboriginal or Torres Strait Islander?

Are you interested in working to improve the health and well being of local Aboriginal communities

EVERYONE IS WELCOME

When: Tuesday 2 December, 2014

Where: Lithgow Information & Neighbourhood Centre

1 Padley Street, LITHGOW

Time: 10:00 - 12:00

For more information contact

Sonia - Secretary 63545907

sonia@inc.org.au

Jackeroo Ranch

Horse Riding Spring School Holiday Riding Camps

Jackeroo Ranch (est 54 Years) and recently relocated to Bingletree Station at Upper Turon, are again running their popular horse riding camps in the winter vacation.

1st week:

Saturday 3rd January – Saturday 10th January 2015
(from 3 days stay to 10 days stay)

2nd week:

Saturday 10th January— Sunday 18th January 2015

Shorter stays are possible if camps are not fully booked. These camps are for "horse-mad" children aged from 6 to 16 years. Five to six hours per day are devoted to horse activities including a one hour lesson and three hour trail riding in the beautiful Turon Valley– with tuition still being given. As well, campers are taught grooming, saddling, haltering and catching a horse with safety aspects and many other facets of horsemanship. Previous experience not necessary as beginners to advanced riders are catered for. We specialise in teaching nervous riders and developing their confidence. **This is "not just a camp"** it's a wonderful farm experience your child will treasure forever.

Enquiries: Mrs Pattie Hudson- Phone 6337 7173
(Nights are best)



www.jackerooranch.com.au



Nutrition Snippet

The simplest way

...make Christmas healthy

Christmas is full of temptation: from bowls of chocolate, to puddings to pavlovas.

It's important you still aim for two serves of fruit + five serves of veg, every day.

Try and restrict your family's treats until Christmas Day, and follow these three steps for healthier choices:

1. Serve veggie sticks with veggie dips as a starter, so you fill up on healthier food first.
2. Serve a large fruit salad or fruit kebabs alongside dessert.
3. Make sure half your plate is filled with vegies (think roasted or raw salads).



For more information visit
www.eatittobeatit.com.au
or join us at [facebook.com/eatittobeatit](https://www.facebook.com/eatittobeatit)

Eat It To Beat It



Nutrition Snippet

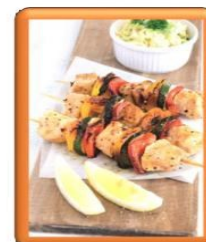
The simplest way

...stay healthy over Summer.

Summertime = BBQ time in Australia.

Here are five ways to make your barbies as healthy and delicious as possible.

- Limit or avoid processed meat like sausages and bacon.
- Use lean cuts of meat.
- Make sure half your plate is filled with vegies.
- Cook vegies like eggplant, zucchini and capsicum straight on the bbq (or as part of the kebab in picture).
- Make a few salads to serve on the side.
- Freezing fruits like grapes and berries make a delicious treat for a dessert on a hot day.



For more information visit
www.eatittobeatit.com.au
or join us at [facebook.com/eatittobeatit](https://www.facebook.com/eatittobeatit)

Eat It To Beat It



Tuesday 9th December

12 noon to 3.30pm

Wallerawang School Library

For every book purchased you receive another book for free.

Australian Government Mobile Service Centre Assistance



medicare
child support

The Australian Government Mobile Service Centre is supporting rural communities by providing convenient access to Australian Government payments and services. This specialised vehicle offers a wide range of face to face and self service assistance for rural families, older Australians, students, job seekers, people with disability, carers, farmers and self-employed people.

You can visit the Mobile Service Centre:

Opposite the shopping precinct, Main Street

WALLERAWANG

2 December 2014

9.30 am to 4 pm

Experienced specialist staff travel with the Mobile Service Centre and provide friendly, face-to-face service, information and support. Our staff can assist you with Centrelink, Medicare, Australian Hearing and Child Support payment and service options. They are specialists in rural servicing and live and work in the communities they serve. If the assistance you're after is not available, arrangements will be made for someone from the relevant organisation to contact you.

For more information, go to humanservices.gov.au and search for Mobile Service Centre or call 132 316.



Australian Government
Department of Human Services

SE1591303



FLASCHENGEIST

spirit in the glass
liquours, spirits, wines, beers & vinegars

CAROL CHEW
CONSULTANT

0438 680 914
CCHW@LIVE.COM.AU

LIKE US ON FACEBOOK!
FLASCHENGEIST PARTIES LITHGOW
& SURROUNDING AREAS

PERFECT GIFTS FOR ALL OCCASIONS



All Light and Power ELECTRICAL

FOR ALL YOUR ELECTRICAL NEEDS!

Kimberley Pattison
Licensed Electrician

mob: **0418 4811 53**

email: alllightandpowerelectrical@hotmail.com
Lic No. 239210C ABN 50668693886



Mu Yeh Taekwondo



Do you want to improve your self-esteem, self-confidence, self discipline and general fitness? Learn the exciting Martial Art and Self-Defence system of Taekwondo! We cater for juniors, seniors, or the whole family! Mu Yeh Taekwondo specialises in street-wise, women's and children's self-defence. Enquire about our Little Dragons class for 4-6 year olds! Also, check out our new Kick-fit fitness Class for adults. (no martial arts experience necessary)

After 15 years at Wallerawang, we have now moved to our new fully equipped studio at Portland.

For more information phone Master Instructor Steve Ashbridge, 6th Dan Black Belt, on 0409 305 327. You can also visit our website at: www.muyehtaekwondo.com

